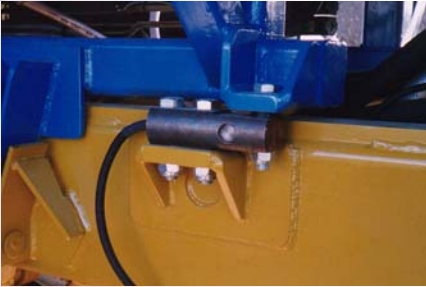


Spreader Monitor

Accurate weighing on the move



The Griffith Elder *Spreader Monitor* is an automatic weighing system used to monitor fertiliser and manure spreaders.

Weighing

At the heart of the *Spreader Monitor* is a sophisticated weighing system that monitors the change in weight in the hopper. Four stainless steel load cells detect the weight in the hopper. Load cells are available to suit most spreaders, ranging from 500kg to 12,000kg capacities.

Simple to Operate

Operating a *Spreader Monitor* couldn't be simpler. Make sure the indicator is switched on and turn the spreader switch on at the start of each job. When spreading is completed, just turn the spreading switch off to view the data.

Area Measurement

The area covered is detected using either a wheel sensor or a ground-speed radar. Area is only recorded while the spreading mechanism is engaged.

Spread Rate

The *Spreader Monitor* shows an instant spread rate while in operation. This allows the operator to easily maintain the correct spread rate.

Indicator

An easy-to-use indicator is available for use inside the vehicle. While spreading, turn the spreading switch on to view the rate of spread. The indicator automatically records the hopper and spread weights and the area covered.



Griffith Elder and Company Ltd
1 Oaklands Park
Bury St Edmunds
Suffolk
IP33 2RW
United Kingdom

Telephone: +44 1284 763616
Fax: +44 1284 700822
Email: sales@griffith-elder.com
Website: www.griffith-elder.com

Spreader Monitor



Accuracy

Accuracy of weighing is guaranteed to within 0.5%. All load cells are fully calibrated in the factory ready to use.

Model WT1

The **WT1 indicator** is the basic weighing system. The display shows the weight in the hopper and this can be put into memory for each load.

Model WTSM

The **Spreader Monitor type WTSM** monitors the hopper and spread rate, giving weight in hopper, total amount spread, average rate and area covered. When the WTSM is actually spreading it shows the spot rate and can also have an actuator fitted that will control the floor drag chain speed. At the end of each field or batch a record can be saved in memory with date and time.

Printer

The printer can be added to print a ticket with the spreading records on.

Build Standard

The **Spreader Monitor** is built to the highest standards to suit the hardest conditions. The indicator is housed in a waterproof housing. IP68 connectors are used throughout. The capacity of the load cells can be between 500kg and 12,000kg depending on the body weight, and are sealed to IP67.

The entire system, including load cells and electronics, is designed and manufactured by Griffith Elder.



Griffith Elder and Company Ltd
1 Oaklands Park
Bury St Edmunds
Suffolk
IP33 2RW
United Kingdom

Telephone: +44 1284 763616
Fax: +44 1284 700822
Email: sales@griffith-elder.com
Website: www.griffith-elder.com